

THE PINEAL GLAND - EYE OF HORUS
- PART 2 -



ARITHMETIC OF THE EYE OF HORUS

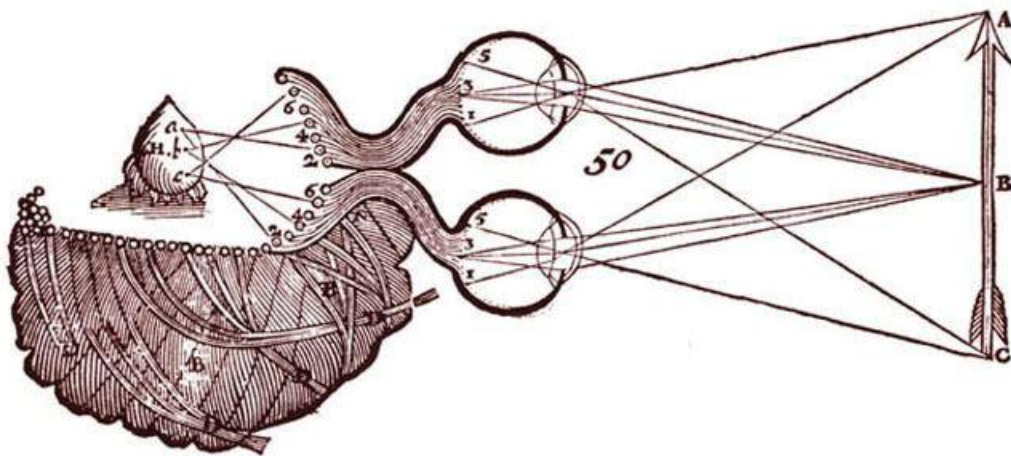
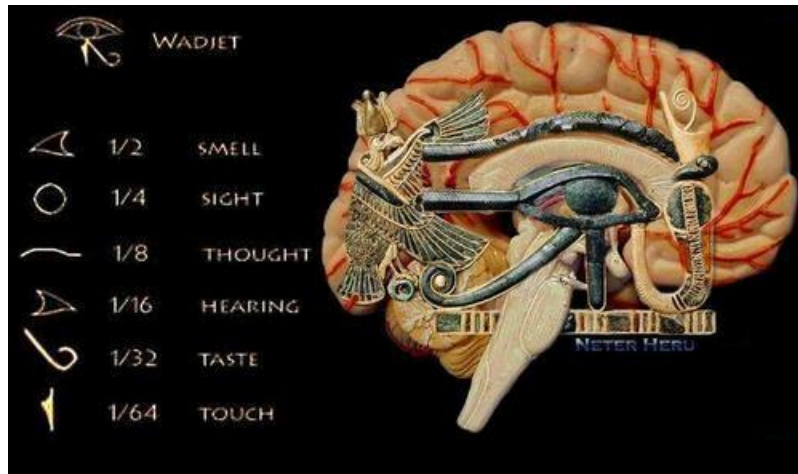
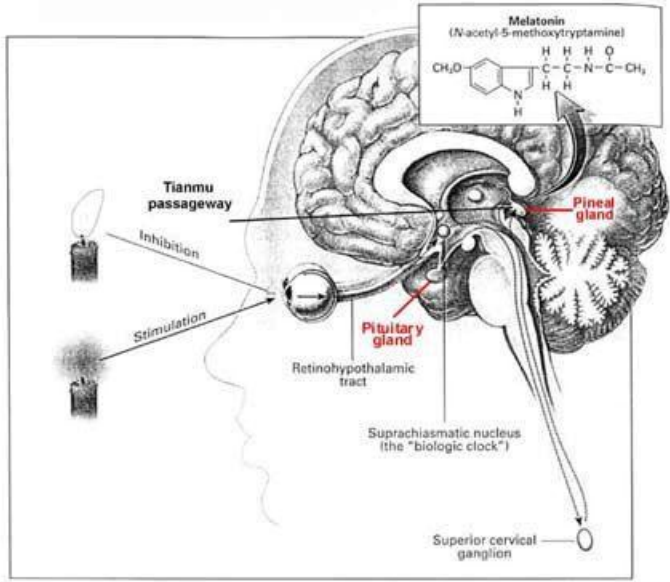
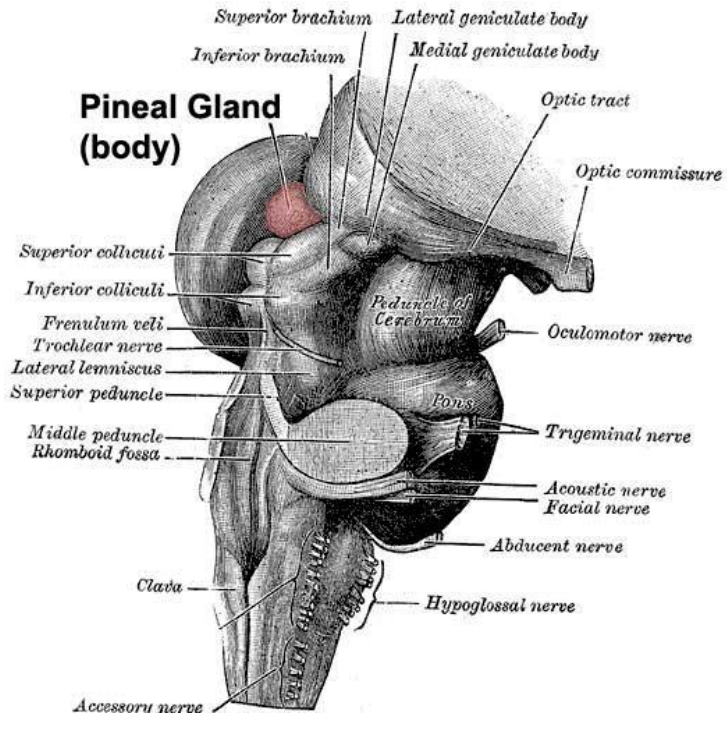
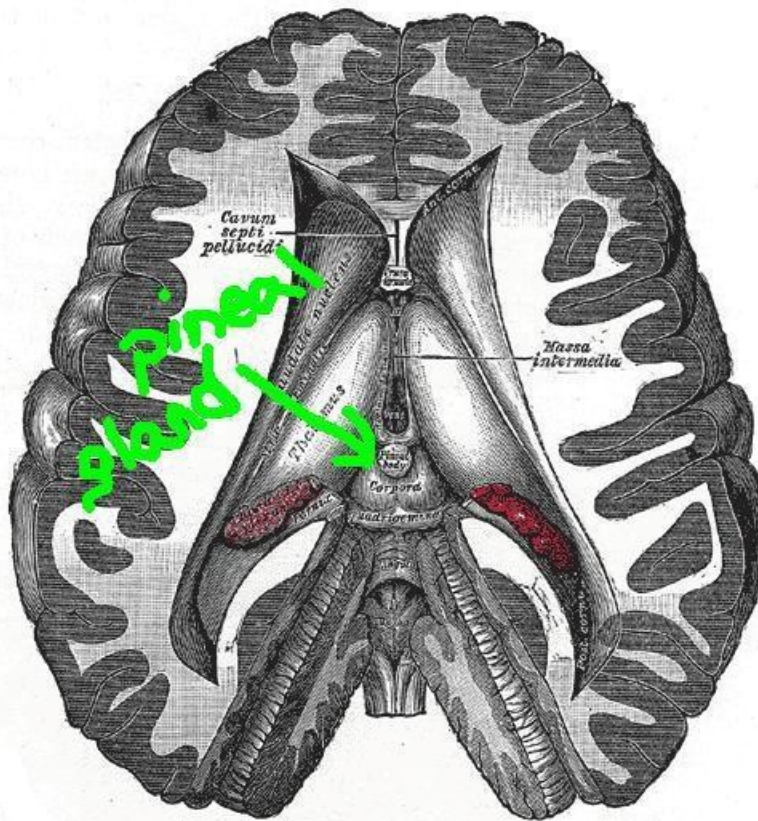
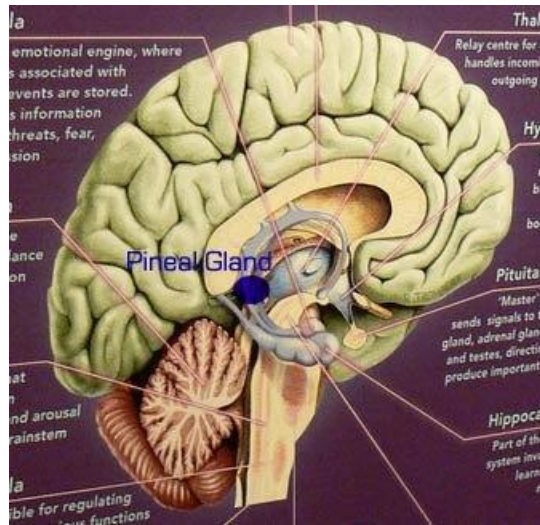
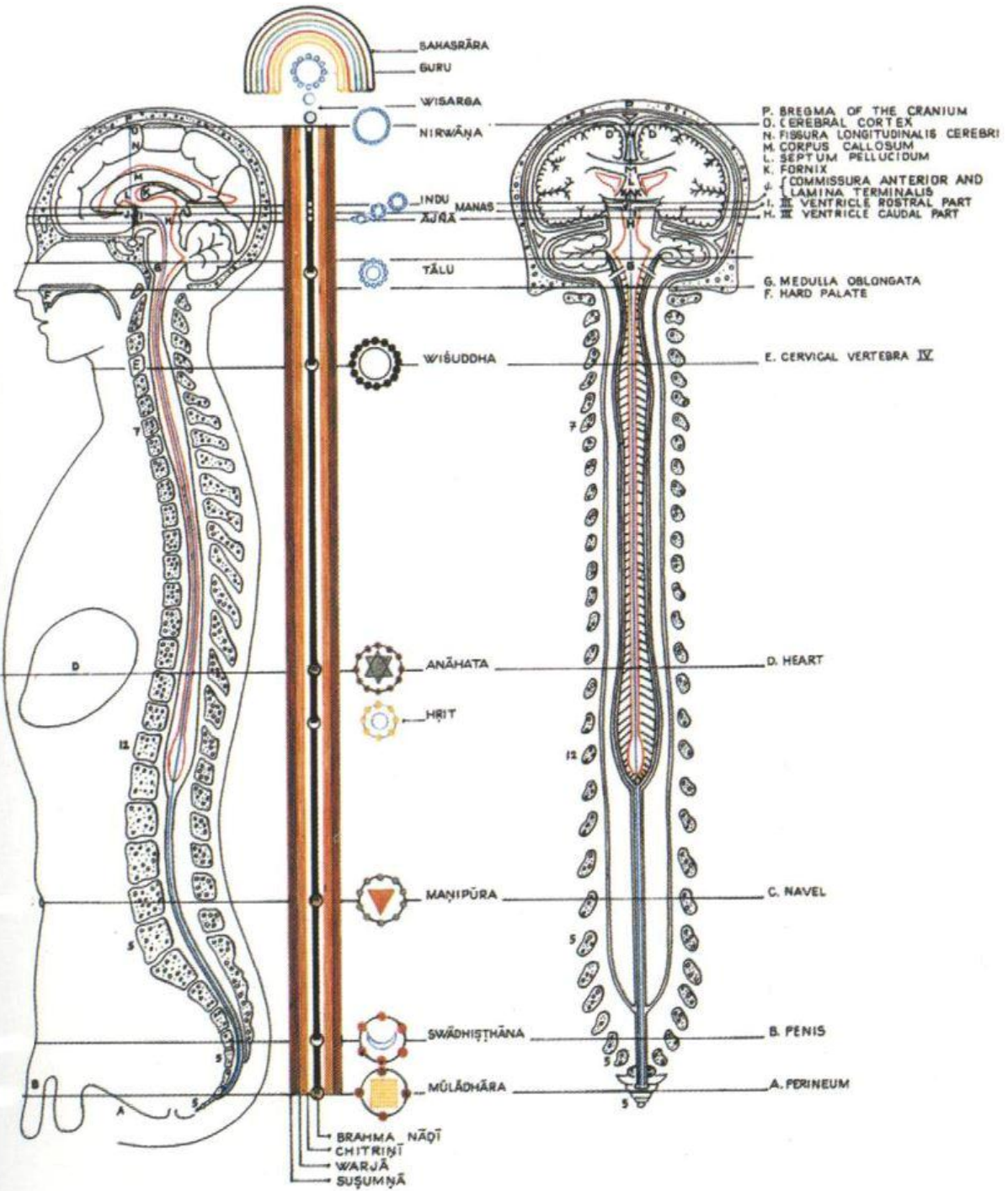


Figure 3. Binocular stereoscopic visual system as imagined by Des Cartes. The two retinal images of the arrow are accurately, point for point, projected upon the surface of the cerebral ventricles and thence to the centrally located pineal gland, H, the supposed "seat of imagination and common sense".
From Polyak (1957).





PINEAL GLAND AND THE KUNDALINI



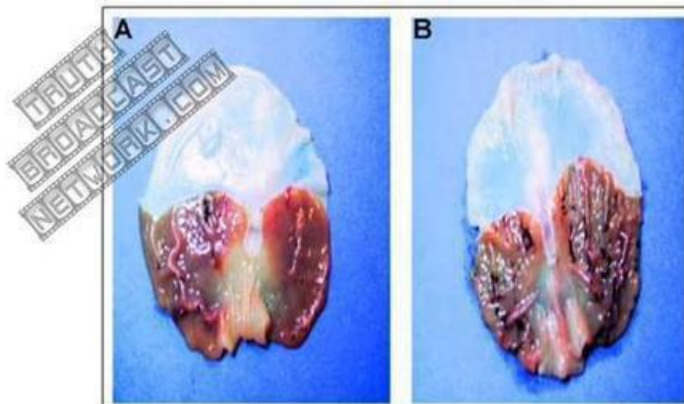
FLUORIDE SIDE EFFECTS

- Cancer
- Brain Damage in Unborn Fetus
- Bone Weakness
- Dental Fluorosis
- Low Estrogen & Testosterone Levels
- Damages Stomach
- Joint Problems
- Skeletal Fluorosis
- Osteoarthritis & Accelerates Osteoporosis
- Lowers I.Q
- Memory Loss
- Lack of Motivation
- Apathy & Passivity
- Inhibits Melatonin Production
- Impairs Immune System
- Attacks your Pineal Gland
- Kidney Stones & Kidney Failure
- Interferes with White Blood Cell Production
- Kills Brain Cells
- Makes you Dumb
- Lowers Sex Drive
- Infertility
- Sedative
- Accelerates the Aging Process
- Attacks Thyroid
- Attacks Hypothalamus
- Shortens Lifespan
- Promotes Mental Disturbances
- Receding Gums
- Affects Heart Circulation
- Makes you Docile & Obeisant
- Autism
- DNA Damage
- Alzheimer's Disease

EDUCATE YOURSELF

SHARE THIS TO
INFORM OTHERS

illuzone
www.illuzone.net



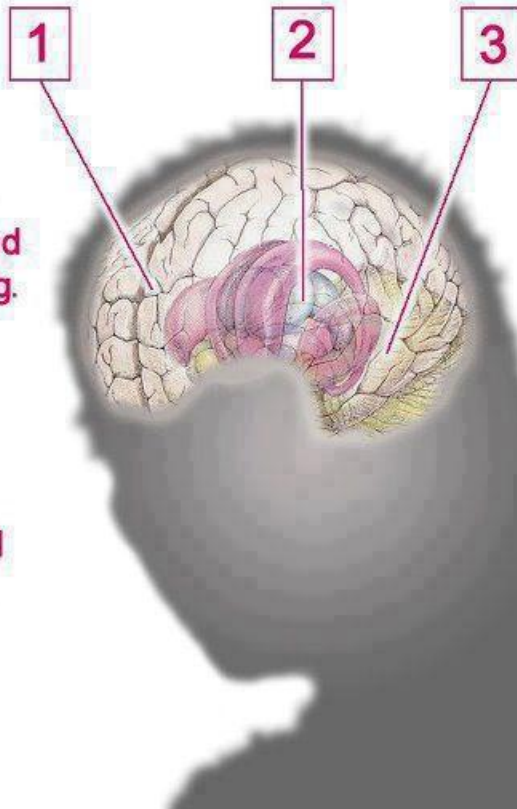
A pineal gland. Fluoride is deposited here as a result of consumption of fluoridated water.

HOW ALCOHOL ATTACKS THE BRAIN

A guide to the sequential damage alcohol inflicts on neural tissue

1. First, alcohol affects the forebrain and **assaults motor coordination and decision making.**

2. Then, alcohol knocks out the midbrain, and you **lose control over emotions and increase chances of a blackout.**



3. Finally, alcohol batters the brainstem as it **affects heart rate, body temperature, appetite and consciousness, a dangerous and potentially fatal condition.**

